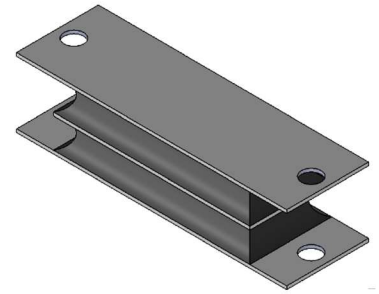
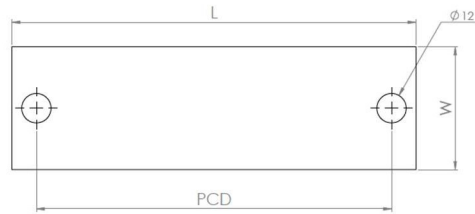
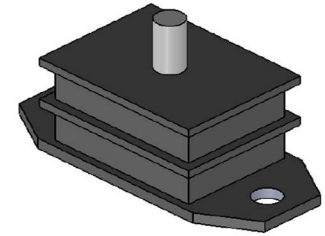
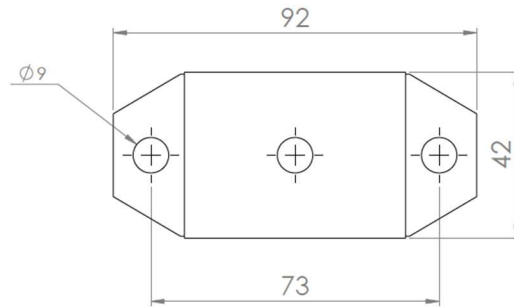
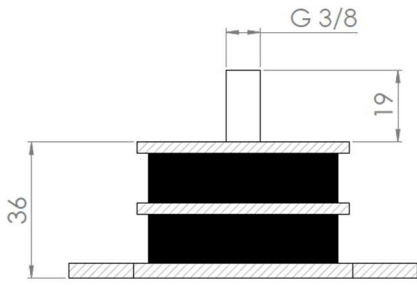


SANDWICH MOUNT



PRODUCT NAME	DIMENSIONS (in mm)			HOLE DIAMETER (in mm)	HOLE CENTRE PCD (in mm)	LOAD CAPACITY (in kg)
	L	W	H			
UMA-SM-A1	93	42	37	10	72	50
UMA-SM-A2	93	42	37	10	72	100
UMA-SM-B1	164	50	41	13	142	200
UMA-SM-B2	164	50	41	13	142	350

SANDWICH MOUNT

- Metal plates on the top and bottom resist deformation and enhance vibration isolation.
- UMABOND Sandwich Mounts are designed to isolate intermittent or continuous vibrations of any kind of machinery.
- These mounts can be easily fastened on ground or flange by the holes provided in the base.
- UMABOND Sandwich Mounts are made available in two models each have two variants.
- Below is the specification of polymer used in both models of UMABOND Sandwich mount.

UMA-SM-A1 / UMA-SM-B1

Polymer	Natural
Temperature Range	-51° C to 80° C
Tensile Strength Range	3.4475 to 24.1316 Mpa
Elongation (Max %)	700 %
Hardness	20 – 90 Shore A
Adhesive to Metals	Excellent
Aging Weather	Poor (Sunlight)
Resilience	Excellent (Rebound)
Compression Set	Excellent
Abrasion Resistance	Excellent
Tear Resistance	Excellent
Solvent Resistance	Poor
Oil Resistance	Poor

UMA-SM-A2 / UMA-SM-B2

Polymer	Natural
Temperature Range	-51° C to 80° C
Tensile Strength Range	20 to 22 Mpa
Elongation (Max %)	150 %
Hardness	65 – 70 Shore A
Adhesive to Metals	Excellent
Aging Weather	Poor (Sunlight)
Resilience	Excellent (Rebound)
Compression Set	Excellent
Abrasion Resistance	Excellent
Tear Resistance	Excellent
Solvent Resistance	Poor
Oil Resistance	Poor